

surface

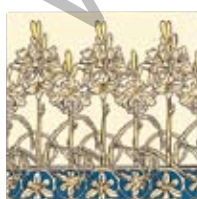
Art Nouveau



Tiles used in this setting: 6054B Single tile, 6055B Quarter tile, B9000 Colonial White field tile.



6050B Ivy
(Le Lierre) 1901



6054B Orchid
(Orchidee) 1902



6051B Ivy quarter tile,
152 x 38mm (6" x 1 1/2")



6055B Orchid quarter tile,
152 x 38mm (6" x 1 1/2")

The background glaze colour is Colonial White. See pages 32-38 for details of plain and moulded tiles.

Tiles used in this setting: 6041B 3-tile set, 6043B Floral, 6059B Corner, 6060B Border, B9000 Field tile, B9002 Half field tile (both Colonial White), GJB9000 Field tile, GJB9901 Victoria, GJB9002 Half field tile (all Jade Breeze).

Alphonse Mucha

Alphonse Mucha (1860-1939) rose from obscurity in Moravia to become one of the most celebrated Parisian artists and illustrators of his time. He was a leading exponent of the art nouveau style, popularising such motifs as flowers on slender, twining stems and romantic female figures with abundant flowing hair.

Original Style has reproduced six of his finest designs and pictures as decorated ceramic tiles and tile panels. These have been expanded into a fully co-ordinated tile collection with the addition of mirror images, single floral tiles and matching borders featuring motifs from the original pictures.



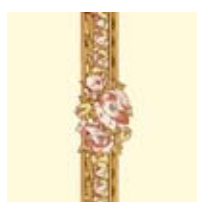


Tiles used in this setting: 6041B/2B 3-tile sets, 6059B Corner, 6060B Border, B9000 Colonial White Field tile.
 (Although a painted wooden skirting board and dado rail are shown here, the B9900 and B9903 moulded tiles would be equally suitable).

Alphonse Mucha
 Nocturnal Slumber



6059B Corner tile



6060B Border tile



6043B Single floral tile



6046B Quarter tile,
 152 x 38mm (6" x 1 1/2")



6041B 3-tile set



6042B 3-tile set



Alphonse Mucha
 Evening Reverie
 (*Reverie du soir*) 1899



6038B 3-tile set



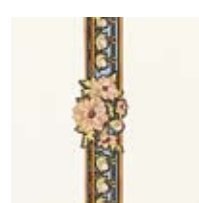
6039B 3-tile set



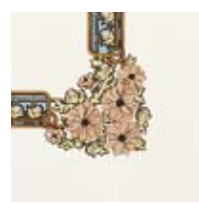
6040B Single floral tile



6046B Quarter tile,
 152 x 38mm (6" x 1 1/2")



6058B Border tile



6057B Corner tile

Tiles used in this setting: 6038B/9B 3-tile sets, 6046B Quarter tile, GJT9000 Field tile, GJT9900 Albert, GJT9909 Omega, (all Sepia), B9000 Colonial White Field tile, A9900 Albert, A9909 Omega (Both brilliant White). For flooring see Original Style Victorian Floor Tiles brochure.

The background glaze colour is Colonial White. See pages 32-38 for details of plain and moulded tiles.

Alphonse Mucha Spring



6049B Single floral tile



6062B Border tile



6061B Corner tile



6066B Corner tile



6047B 3-tile set



6048B 3-tile set



Tiles used in this setting:
 6047B Spring 3-tile set, 6062B Spring
 Border tile, 6061B & 6066B Spring
 Corner tiles, B9000 Colonial White Field
 tile, F9000 Field tile, F9901 Victoria,
 F9900 Albert (all Burgundy).

The background glaze colour is Colonial
 White. See pages 32-38 for details of plain
 and moulded tiles.

surface

SURFACE CERAMICS

69c UPPER GEORGE'S STREET, DUN LAOGHAIRE, CO. DUBLIN
TEL: 01 6638991 | F: 01 6638992 | E: info@surface.ie

SURFACE BATHROOMS

ASHGROVE INDUSTRIAL ESTATE, KILL AVENUE, DUN LAOGHAIRE, CO. DUBLIN
T: 01 6637803 | F: 01 6637823 | E: info@surface.ie

WWW.SURFACE.IE