

surface

# The Masterpiece Collection

What could be more up-lifting to gaze at as you relax in your bath than a work of art by one of the great painters of the past? These painstakingly accurate reproductions of historic paintings

are decorated on to glazed ceramic tiles, creating a new dimension in bathroom design. These tiles are larger and thicker than our normal tiles. To complement these works of art we have developed matching frame sets

which can be laid neatly alongside tiles of any thickness. There are eight tiles in these frames, each ready mitred and available in a choice of three colours.

## Sir Laurence Alma-Tadema (1836-1912)

Although Dutch by birth, Alma-Tadema spent most of his working life in England. He was particularly noted for his paintings of elegant female figures in classical Greek and Roman settings and was described by Punch as a "marvellous artist" for his skill in depicting marble.

The vivid blue of the Mediterranean is a recurring theme in his work and forms the backdrop for three of the four paintings selected by Original Style.

### Dimensions for all 4 Alma-Tadema tiles

Picture tile only:  
560 x 380 x 10mm (22" x 14 3/4" x 1/3")

With frame:  
630 x 450mm (24 1/2" x 17 1/2")

Matching Frame Sets also available:  
6366A Brilliant White.  
6366B Colonial White.  
6366N Black.



6358 Alma-Tadema: At Aphrodite's Cradle (1908), private collection.



6361 Alma-Tadema: A Coign of Vantage (1895), private collection.



6360 Alma-Tadema: Silver Favourites (1903), Manchester City Art Gallery.



6359 Alma-Tadema: The Baths of Caracalla (1899), private collection.

# The Masterpiece Collection

What could be more up-lifting to gaze at as you relax in your bath than a work of art by one of the great painters of the past? These painstakingly accurate reproductions of historic paintings

are decorated on to glazed ceramic tiles, creating a new dimension in bathroom design. These tiles are larger and thicker than our normal tiles. To complement these works of art we have developed matching frame sets

which can be laid neatly alongside tiles of any thickness. There are eight tiles in these frames, each ready mitred and available in a choice of three colours.

## Sir Laurence Alma-Tadema (1836-1912)

Although Dutch by birth, Alma-Tadema spent most of his working life in England. He was particularly noted for his paintings of elegant female figures in classical Greek and Roman settings and was described by Punch as a "marbellous artist" for his skill in depicting marble.

The vivid blue of the Mediterranean is a recurring theme in his work and forms the backdrop for three of the four paintings selected by Original Style.

### Dimensions for all 4 Alma-Tadema tiles

Picture tile only:  
560 x 380 x 10mm (22" x 14 3/4" x 1/3")

With frame:  
630 x 450mm (24 1/2" x 17 1/2")

Matching Frame Sets also available:  
6366A Brilliant White.  
6366B Colonial White.  
6366N Black.



6358 Alma-Tadema: At Aphrodite's Cradle (1908), private collection.



6361 Alma-Tadema: A Coign of Vantage (1895), private collection.



6360 Alma-Tadema: Silver Favourites (1903), Manchester City Art Gallery.



6359 Alma-Tadema: The Baths of Caracalla (1899), private collection.



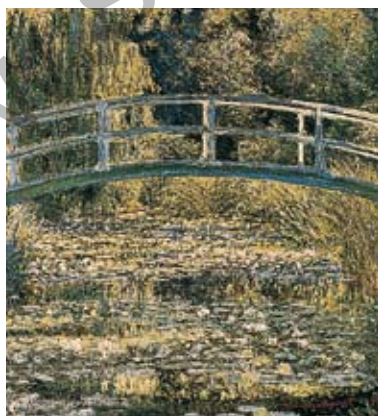
Tiles used in this setting: 6362 Monet: Waterlily Pond with 6367B Colonial White frame, 6361 Alma-Tadema A Coign of Vantage and 6359 Baths of Caracalla with 6366B Colonial White frame, B9002 Colonial White Half tile, GJB9022A Jade Breeze Parthenon, GJB9909 Jade Breeze Omega, GJB9900 Jade Breeze Albert. For flooring see Original Style Victorian Floor Tiles brochure.

**6362 Monet: Waterlily Pond (1899),**  
National Gallery, London.

Picture tile only:  
380 x 395mm x 10mm (14<sup>3</sup>/<sub>4</sub>" x 15<sup>1</sup>/<sub>2</sub>" x 1/<sub>3</sub>)

With frame:  
450 x 465mm (17<sup>1</sup>/<sub>2</sub>" x 18")

Matching Frame Sets also available:  
**6367A** Brilliant White.  
**6367B** Colonial White.  
**6367N** Black.



**6363 Monet: Argenteuil (c.1875),**  
Musee de l'Orangerie, Paris.

Picture tile only:  
380 x 445mm x 10mm (14<sup>3</sup>/<sub>4</sub>" x 17<sup>1</sup>/<sub>4</sub>" x 1/<sub>3</sub>)

With frame:  
450 x 515mm (17<sup>1</sup>/<sub>2</sub>" x 20")

Matching Frame Sets also available:  
**6368A** Brilliant White.  
**6368B** Colonial White.  
**6368N** Black.



## Claude Monet (1840-1926)

Monet gave birth to the Impressionist movement in late 19th-Century France. His passion was depicting the effects of light, particularly on water, which often led him to paint the same scene several times over in a variety of daylight conditions. He lived for a few years at Argenteuil on the River Seine and later bought a house near the village of Giverny in the large garden of which many of his greatest masterpieces were painted.

The Waterlily Pond (1899) is one of a series featuring Monet's own water garden and Japanese footbridge at Giverny in which his use of colour and light is at its most exquisite.

Argenteuil (c.1875) shows a variety of colourful boats moored on the River Seine. It was probably painted from the artist's specially built "studio boat".

## Raffaello Sanzio, known as Raphael (1483-1520)

Born in Urbino, the son of an artist, Raphael was called to Rome in 1508 to carry out a number of commissions for Pope Julius II.

Thereafter his work was in great demand from wealthy Roman merchants and noblemen. Influenced by both Leonardo da Vinci and Michelangelo, he nevertheless established his own distinctive style and became one of the great Classical artists of the High Renaissance.

Galatea (1511-12) is a fresco commissioned by the Sienese banker, Agostino Chigi, to decorate the wall of a loggia at his riverside villa. It shows the nymph, Galatea, dramatically surrounded by "amorini, mermaids, hippocamps and nereids" and survives today in what is now called the Villa Farnesina, after a later owner.



6365B Raphael: Galatea (1511-12), Villa Farnesina, Rome.

Picture tile only:  
560 x 420mm x 10mm (22" x 16" x 1/3)

With frame:  
630 x 490mm (24 1/2" x 19")

Matching Frame Sets also available:  
6370A Brilliant White.  
6370B Colonial White.  
6370N Black.



In addition to the Masterpiece tiles and frames, the following tiles have been used to create this setting: N9000 Field tile, N9901 Victoria, N9903 Skirting, N9929 Plain Cornice, N9905 Dentil, N9906 Egg & Dart, N9022A Parthenon, N9025A Greek Key (all Jet Black), A9000 Brilliant White Field tile.



## Sandro Botticelli

(1444-1510)

Widely acknowledged as one of the greatest Italian Renaissance painters, Botticelli lived and worked in Florence where he attracted the patronage of the powerful Medici family. He had a distinctive, personal style and drew his

inspiration from a multitude of sources, classical and Biblical as well as contemporary.

The Birth of Venus (c.1481), perhaps his best known work, was commissioned for one of the many Medici villas around Florence and is now in the Uffizi Gallery.

6364 Botticelli: Birth of Venus (c.1481), Uffizi Gallery, Florence.

Picture tile only:  
360 x 560mm x 10mm (14" x 22" x 1/3")

With frame:  
430 x 630mm (16 3/4" x 24 1/2")

Matching Frame Sets also available:  
6369A Brilliant White.  
6369B Colonial White.  
6369N Black.

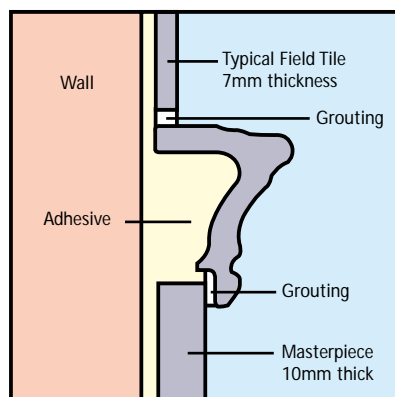
Because the tiles in the Masterpiece series are thicker (10mm rather than 7mm), they are also heavier.

Special care should therefore be taken before fixing them to a wall, to ensure safe installation.

It is particularly important that the wall is of sufficient strength and rigidity and also that it is sound and completely free from paint and paper of any kind.

The picture tiles as well as the frame tiles should be laid in a solid bed of adhesive to ensure the best possible bond. This is described in the Masterpiece tile fixing instructions.

If you have any doubts on the fixing of the Masterpiece series you should seek help or advice from a qualified, professional tile fixer.



Black



Colonial White



Brilliant White



Tiles used in this setting: 6358 At Aphrodite's Cradle, 6361 A Coign of Vantage, 6359 The Baths of Caracalla, GJT9903 Skirting, GJT9900 Albert, GJT9928 Hogarth (all Sepia), GIC9000 Field tiles, GIC9909 Omega, GIC9221 Rectangle (all Ecru), B9000 Field tile, B9002 Half Field tile, B9921 Sigma, B9923 Scroll, 6366B Frame set (all Colonial White). For flooring and panel centre tile see Original Style Victorian Floor Tiles brochure.



# surface

---

## SURFACE CERAMICS

69c UPPER GEORGE'S STREET, DUN LAOGHAIRE, CO. DUBLIN  
TEL: 01 6638991 | F: 01 6638992 | E: info@surface.ie

---

## SURFACE BATHROOMS

ASHGROVE INDUSTRIAL ESTATE, KILL AVENUE, DUN LAOGHAIRE, CO. DUBLIN  
T: 01 6637803 | F: 01 6637823 | E: info@surface.ie

---

[WWW.SURFACE.IE](http://WWW.SURFACE.IE)